

材质：80g双脚单色

320mm



### CM900 UHF Reader Quick Start Guide

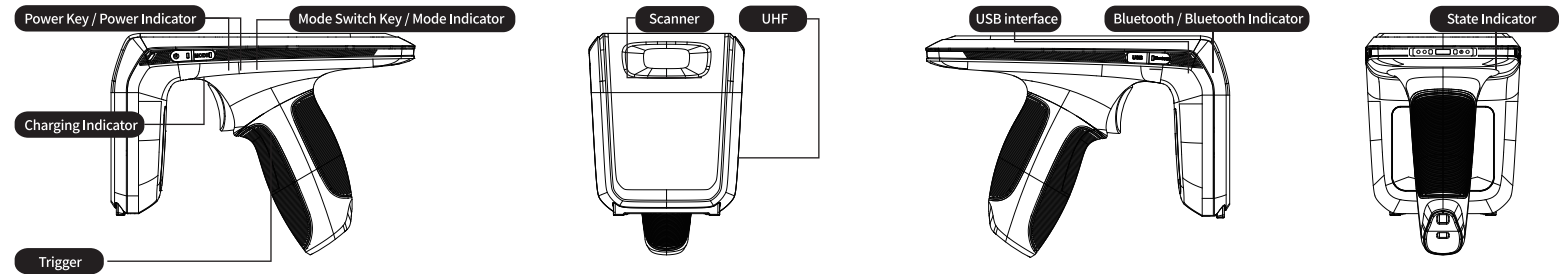
- Accessories list:
- UHF reader
  - Charger
  - USB cable
  - Quick start guide
  - Qualification certificate
  - 5700mAh battery

CILICO Microelectronics Limited

contact@cilico.com www.cilico.com

HQ add: 4th Floor, Building A, HuixinBC, Zhangba 1st Road, Hi-tech Zone, Xian, China  
ShenZhen add: 2nd Floor, Building A, Runfeng Industrial Park, Bao'an, Shenzhen, China

## 1 Appearance of UHF reader



## 2 Basic Operation

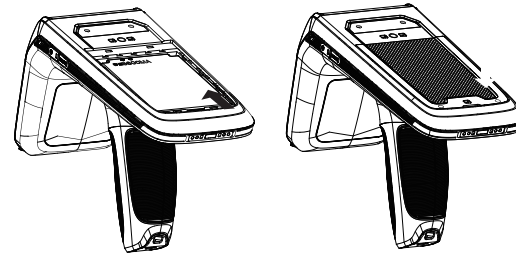
**Power Key and Power Indicator:** Long press power key for 2 seconds, two beeps with red indicator means the reader power on. Long press again for 2 seconds, it will power off.

**Mode Switch Key and Mode Indicator:** The default mode is UHF mode with green indicator. Long press mode switch key for 2seconds, one beep with blue indicator means switch to Scanning mode. This key use to switch the modes between UHF and Scanning.

**Bluetooth Key:** Turn on and turn off the Bluetooth under power on state. The Bluetooth indicator will flash when turn on the Bluetooth, it is waiting for connection. And the blue indicator means connect successfully. The reader will record the last on/off state.

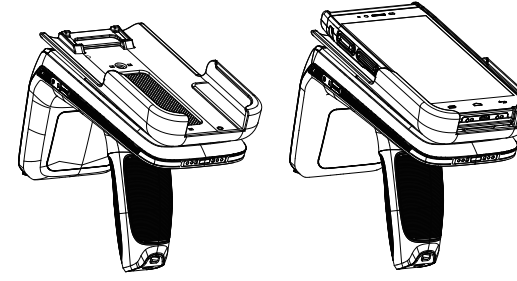
**State Indicator:** Barcode scanning or UHF tags reading successfully with a green indicator, otherwise with red indicator.

## 3 Install and Remove battery



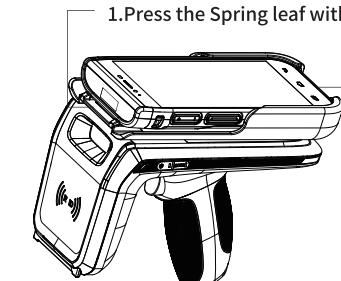
Open the battery cover, install or remove the battery

## 4 Install the bracket and PDA (F760 for example)



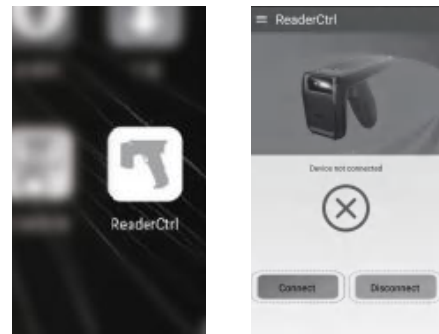
Fix the bracket on top of the reader with three screws, and install the PDA on the bracket

## 5 Remove PDA (F760 for example)



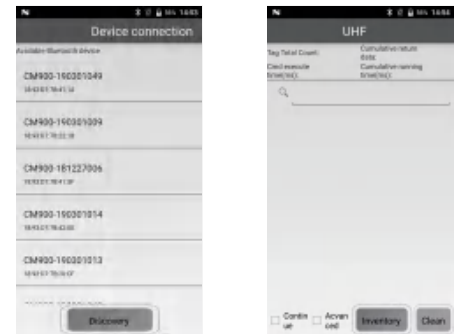
1. Press the Spring leaf with left thumb  
2. Push the PDA from back to forward with right hand

## 6 APP installation and use on PDA



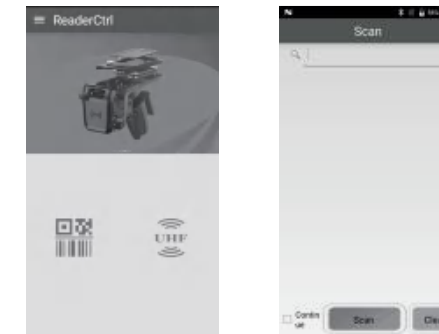
APP icon and interface

## 7 APP connection with reader



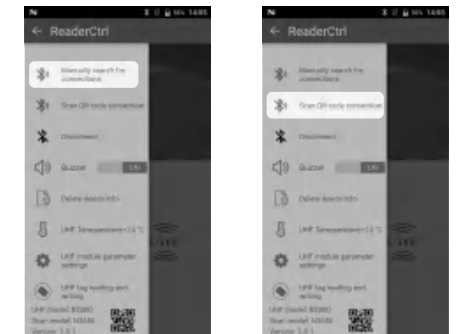
Select the Bluetooth name of the reader, it will jump to UHF function interface after connection

## 8 Functions Interface



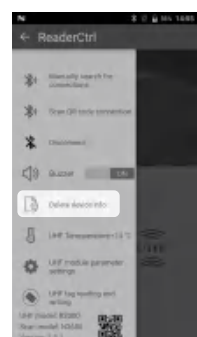
Choose Scan or UHF on this interface

## 9 Bluetooth connections

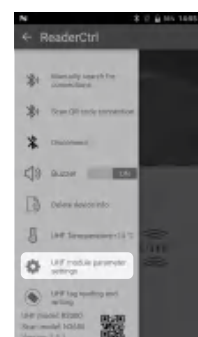


Manually connection by searching / Scan QR code for connection

## 10 Delete device info



## 11 UHF Module parameter settings



## 12 Safety tips

1. Use of an unacceptable or incompatible power supply, charger, or battery may cause a fire, explosion, or other hazards.
2. Only the accessories that are approved by the device manufacturer and are compatible with this type of device can be used. If other types of accessories are used, it may violate the warranty terms of the device and the relevant provisions of the country where the device is located, and may lead to safety incidents.
3. The charge can only be carried out at the temperature between 0°C and 35°C and the device is used at the temperature between -20°C and 45°C. When the ambient temperature is too high or too low, it may cause device failure.

4. When the battery is completed for charging or not charged, please disconnect the charger from the device in time and unplug the charger from the power outlet. Do not continue to charge the battery for a long time after completion of charging, because overcharging will shorten the battery life.
5. When the battery is laid aside without being used, the battery itself will discharge. It should be avoided that the battery is over discharged due to a long time without being used. If the battery has been over-discharged, please charge the battery in shutdown mode for a period before starting up the device.
6. When charging, if you smell something unusual, and notice the situation of overheat or smoke, please immediately turn off the power and pull off the plug from the AC outlet, and contact your dealer or our customer service center. Continual use may cause the risk of fire and electric shock.
7. Please dispose of the device, its battery and accessories according to local regulations. Do not treat them as household waste. Improper handling of the battery may cause an explosion.

8. PDA may become hot in the process of charging or prolonged use. It belongs to normal phenomenon, and will not affect the life or performance of the device. If the battery is overheated, please stop using it for a while.
9. The battery can be charged repeatedly. But because the battery belongs to rapid wearing product, the standby time will be shortened after prolonged use.
10. The battery charging time varies with temperature conditions and battery usage status.

### Warm Tips:

1. Pls ensure fully charge the battery(100%) for first time use.
2. Pls charge in time if power lower than 20%.



### Warning

1. Please remove the power and USB cable under thunderstorm weather conditions, to avoid damage from thunder and lightning.
2. Keep away from heat source, please ensure sufficient circulation.
3. Pay attention that the scanner is waterproof during storage, transportation and running.
4. Please use a matching power adapter offered by the authorized producer.

RoHS CE0700

360mm